

⇒ TENTATIVE PRINT ⇐

CAUTION: SPECIFICATIONS ARE TENTATIVE, FINAL GLASS WEIGHT, FILL POINTS AND SIZES TO BE ESTABLISHED FROM ACTUAL PRODUCTION.

THIS BOTTLE, AS DESIGNED, DOES NOT PROVIDE STANDARD CROWN REST PLATFORM CLEARANCE. CUSTOMER MUST CONTACT THE EQUIPMENT SUPPLIER TO CONFIRM THAT SUITABLE CLEARANCE IS AVAILABLE.

① TENTATIVE FILL POINT(S) - APPROXIMATE LOCATION DETERMINED FROM COMPETITOR PRINT. ACTUAL LOCATION TO BE DETERMINED FROM SAMPLING AND/OR FIRST PRODUCTION. FILL LOCATION MAY VARY UP OR DOWN FROM THAT INDICATED.

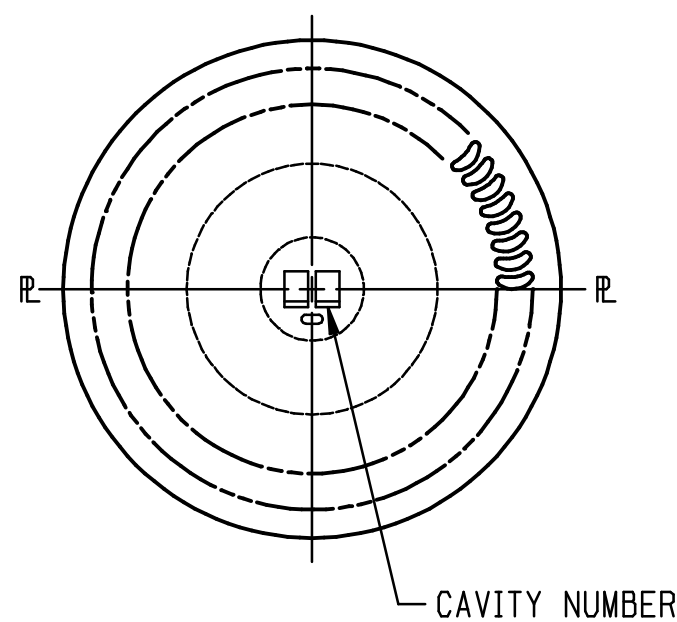
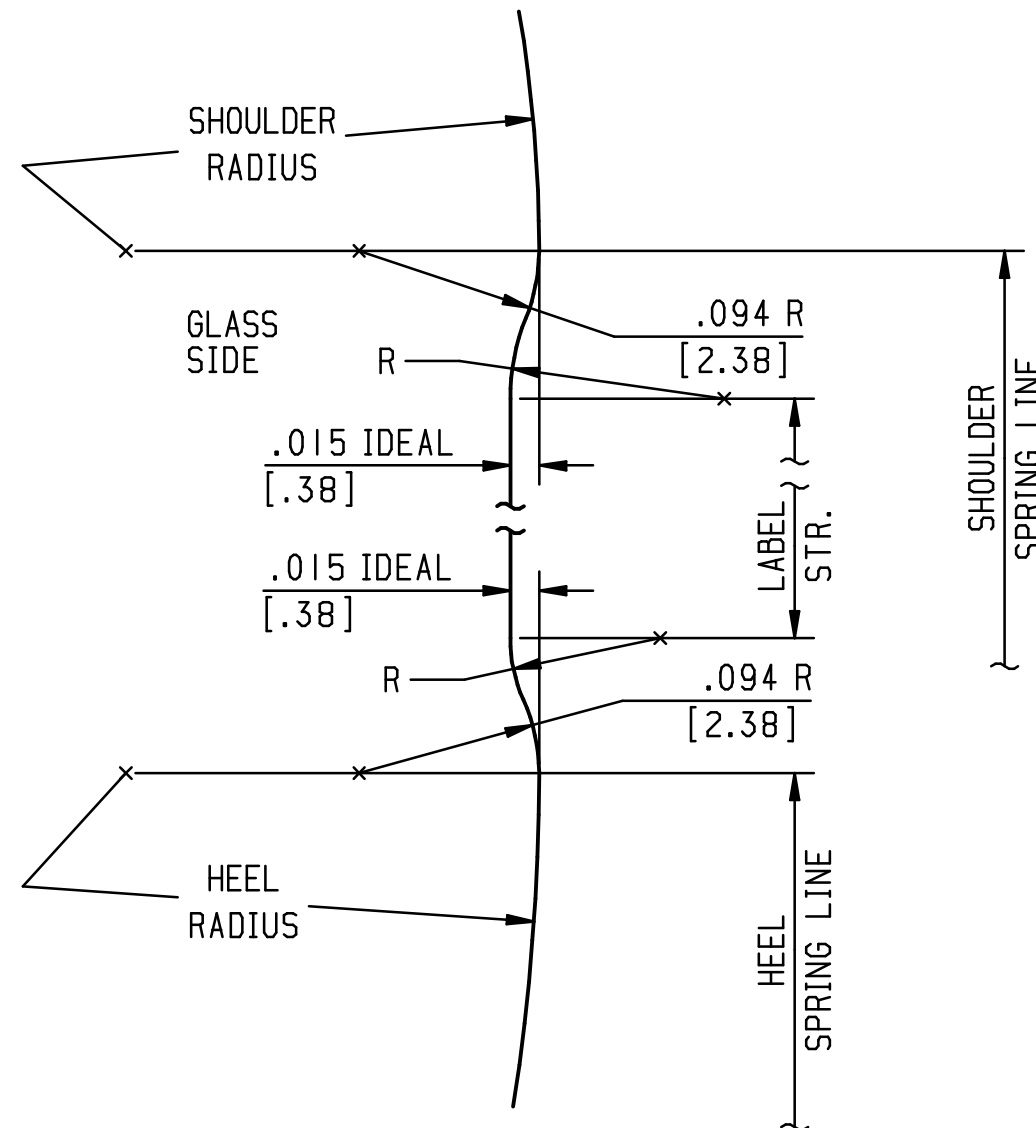
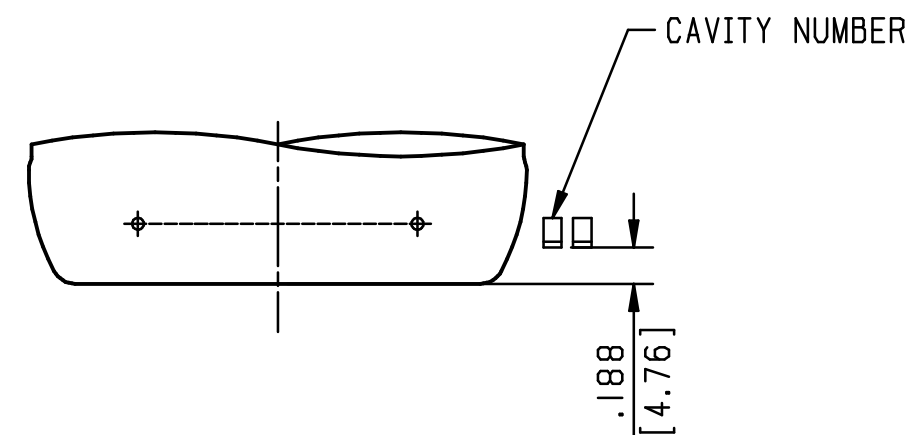
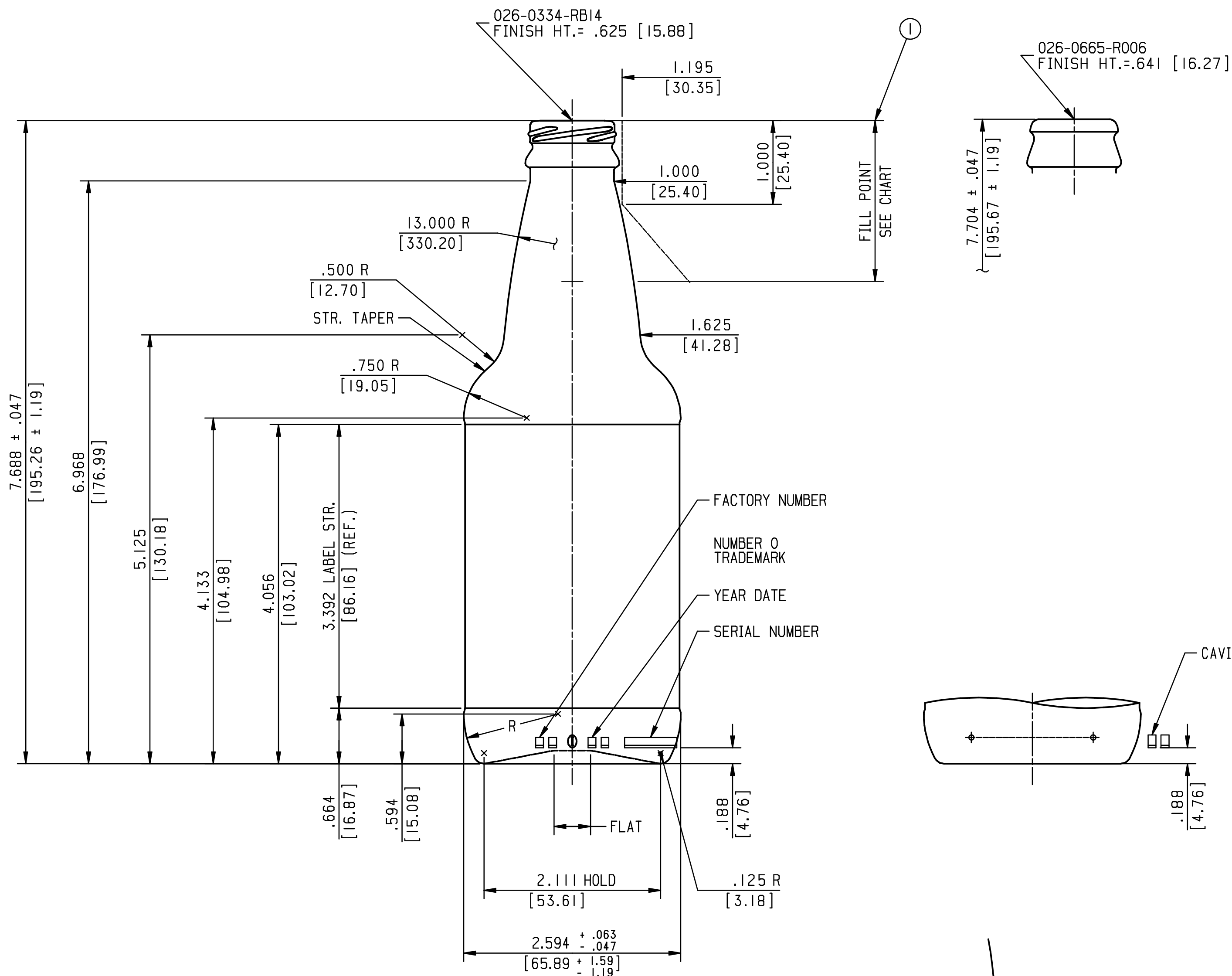
HEEL LETTERING TO APPEAR ON SIDE OPPOSITE C.I.D. III DOTS, AND TO BE .125 [3.18] TALL.

C.I.D. III DOTS AND CAVITY NUMBER TO APPEAR ON HEEL. CAVITY NUMBER TO BE .156 [3.97] TALL.

OPTIONAL:
BOTTOM PLATE LETTERING TO BE .188 [4.76] TALL, WITH BAR BELOW LETTERING.

OPTIONAL:
C.I.D. RINGS TO APPEAR ON BOTTOM.

CRESCENT KNURLING TO APPEAR ON BEARING SURFACE.



LABEL INDENT DETAIL

SCALE: 10 TO 1

NNPB OPERATION ONLY.

APPROX. STABILITY PROPERTIES	EMPTY	FULL
CENTER OF GRAVITY (IN INCHES)	2.81	2.76
BOTTLE STABILITY RATIO	0.75	0.76
TIP ANGLE (IN DEGREES)	20.7	20.9


THIS ITEM UTILIZES BLANK AND FINISH EQUIPMENT FROM GB-16274.

THIS CONTAINER IS DESIGNED FOR PASTEURIZED PRODUCTS UP TO AND INCLUDING 3 GAS VOLUMES WHERE PASTEURIZATION TEMPERATURE OF 145° F IS NOT EXCEEDED.

IT IS THE RESPONSIBILITY OF THE GLASS CONTAINER PURCHASER TO CONSULT WITH ITS CLOSURE AND CONTAINER SUPPLIERS TO DETERMINE THE APPROPRIATE PRESSURE LIMITS FOR THE COMBINATION OF THE CONTAINER, ITS FINISH, AND THE CLOSURE CHOSEN, WHEN THE CONTAINER WILL BE SUBJECTED TO PRESSURE OR USED FOR CONTENTS UNDER PRESSURE.

FINISH	OVERFLOW CAPACITY	WEIGHT	F.P. DOWN IN INCHES
026-0334-RB14	12.750 fl. oz. ± .188 fl. oz. [377.06ml ± 5.55ml]	6.797oz. ± 0.313oz. [192.69g ± 8.86g]	1.922 [48.82]
026-0665-R006	12.753 fl. oz. ± .188 fl. oz. [377.15ml ± 5.55ml]	6.819oz. ± 0.250oz. [193.32g ± 7.09g]	1.938 [49.23]

NOTICE
INFORMATION CONTAINED HEREIN CONSTITUTES PROPRIETARY CONFIDENTIAL INFORMATION OF OWENS-ILLINOIS, INC. AND IS TO BE ACCEPTED ONLY SUBJECT TO THAT UNDERSTANDING. IT IS TO BE KEPT CONFIDENTIAL AND NOT TO BE COPIED, USED OR CONVEYED TO OTHERS WITHOUT OWENS-ILLINOIS WRITTEN AUTHORIZATION.

REVISIONS		ALL LETTERING TO BE ROUND BOTTOM STYLE, RAISED IN GLASS, UNLESS OTHERWISE NOTED. CAPACITY VALUES BASED ON WATER AT 68°F [20°C]		METRIC SHOWN IN BRACKETS		STOCK		 OWENS-BROCKWAY Glass Container Inc. Container Engineering One Seagate Toledo, Ohio 43666
-3	UPDATED TITLEBLOCK.	PAT	03 MAR 00	RATED CAPACITY	12.000 FL. OZ.	[354.88 ml]	12 FL. OZ. NON-REFILLABLE	
-2	ADDED 026-0665-R006 FINISH AND CAP. CHART.	MEK	28 JUL 99	OVERFLOW CAPACITY	SEE CHART		DESCR. ROUND	
-1	ADDED MOLD NUMBER.	ERA	12 OCT 98	FILL POINT	SEE ABOVE		INTL. CAD LIB.DHAM	
				WEIGHT	SEE CHART		DATE: 15 SEP 98 REF. NO. GB-16113,GB-16274 ⑥	
							DRAWN: RRD CHECKED: _____ APPROVED: 6 MAR 00	
							DRAWING NUMBER BE-36192-3	
							MOLD NUMBER GB-16285	