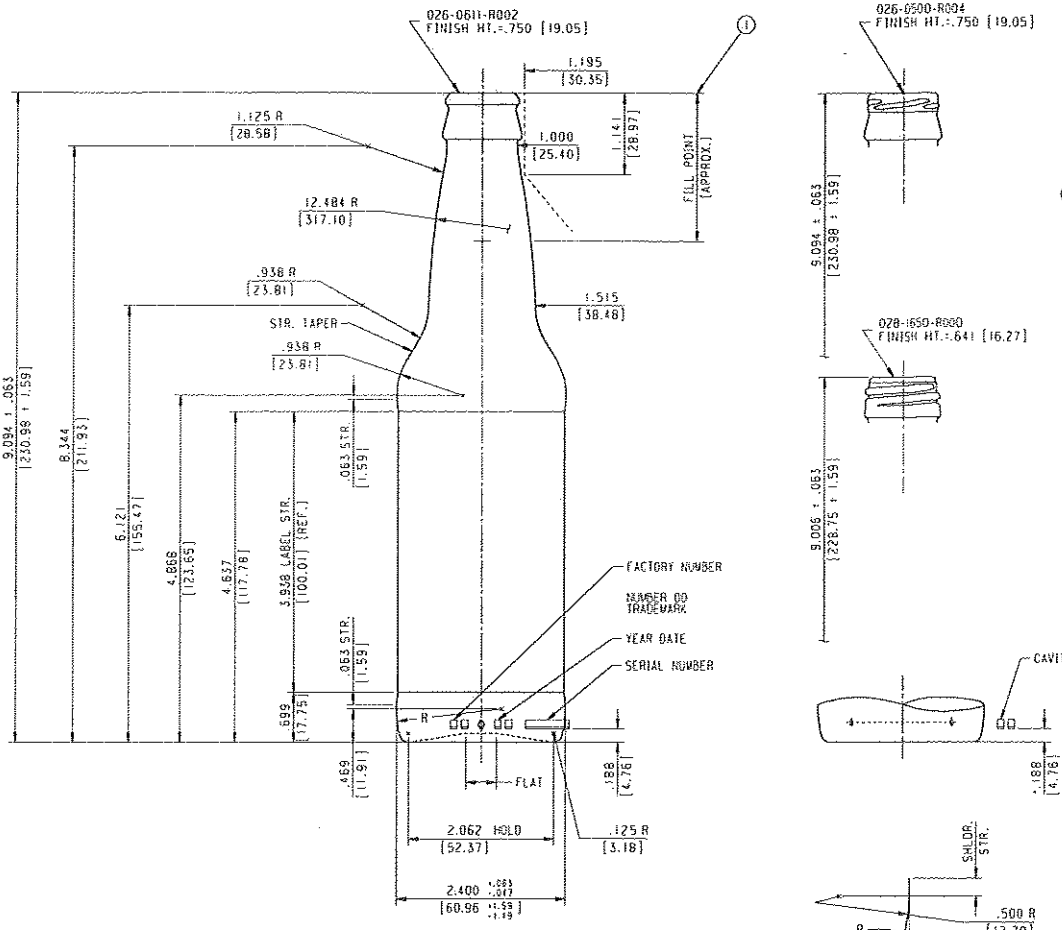


**TENTATIVE PRINT**  
 CAUTION: SPECIFICATIONS ARE TENTATIVE, FINAL GLASS WEIGHT, FILL POINTS AND SIZES TO BE ESTABLISHED FROM ACTUAL PRODUCTION.



THIS BOTTLE, AS DESIGNED, DOES NOT PROVIDE STANDARD CRUM REST PLATFORM CLEARANCE. CUSTOMER MUST CONTACT THE EQUIPMENT SUPPLIER TO CONFIRM THAT SUITABLE CLEARANCE IS AVAILABLE.

① TENTATIVE FILL POINT(S) - APPROXIMATE LOCATION DETERMINED FROM COMPETITOR PRINT. ACTUAL LOCATION TO BE DETERMINED FROM SAMPLING AND/OR FIRST PRODUCTION. FILL LOCATION MAY VARY UP OR DOWN FROM THAT INDICATED.

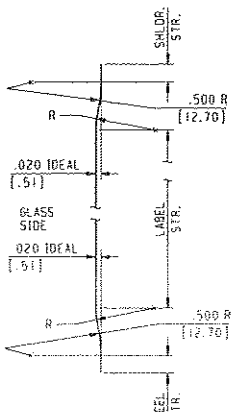
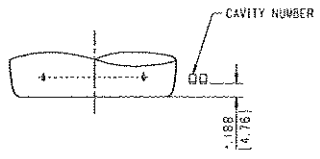
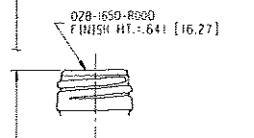
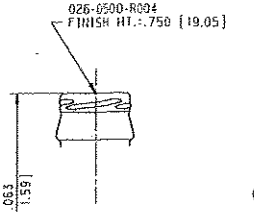
C.I.D. III DOTS AND CAVITY NUMBER TO APPEAR ON HEEL. CAVITY NUMBER TO BE .125 (3.18) TALL.

HEEL LETTERING TO APPEAR ON SIDE OPPOSITE C.I.D. III DOTS, AND TO BE .125 (3.18) TALL.

OPTIONAL: BOTTOM PLATE LETTERING TO BE .108 (4.76) TALL, WITH BAR BELOW LETTERS.

OPTIONAL: C.I.D. RINGS TO APPEAR ON BOTTOM.

CRESCENT MARKING TO APPEAR ON BEARING SURFACE.



**NNPB/B&B OPERATION ONLY.**

APPROX. STABILITY PROPERTIES	EMPTY	FULL
CENTER OF GRAVITY (IN INCHES)	3.63	3.36
BOTTLE STABILITY RATIO	0.54	0.58
TIP ANGLE (IN DEGREES)	15.1	16.3

CAUTION: C.I.D. DOTS PROTRUDES BEYOND THE MAJOR DIAMETER AND CONTACT POINT OF THIS CONTAINER. THIS MAY RESULT IN HANDLING PROBLEMS DURING PROCESSING.

IT IS THE RESPONSIBILITY OF THE GLASS CONTAINER PURCHASER TO CONSULT WITH ITS CLOSURE AND CONTAINER SUPPLIERS TO DETERMINE THE APPROPRIATE PRESSURE LIMITS FOR THE COMBINATION OF THE CONTAINER, ITS FINISH, AND THE CLOSURE CHOSEN, WHEN THE CONTAINER WILL BE SUBJECTED TO PRESSURE OR USED FOR CONTENTS UNDER PRESSURE.

THIS CONTAINER IS DESIGNED FOR PASTEURIZED PRODUCTS UP TO AND INCLUDING 4 GAS VOLUMES WHERE PASTEURIZATION TEMPERATURE OF 145° F IS NOT EXCEEDED.

NOTICE  
 INFORMATION CONTAINED HEREIN CONSTITUTES PROPRIETARY, CONFIDENTIAL INFORMATION OF OWENS-BROCKWAY, INC. AND IS TO BE ACCEPTED ONLY SUBJECT TO THE UNDERSIGNED'S WRITTEN CONSENT. THIS INFORMATION IS NOT TO BE COPIED, REPRODUCED OR OTHERWISE DISCLOSED WITHOUT OWENS-BROCKWAY'S WRITTEN APPROVAL.

FINISH	OVERFLOW CAPACITY	WEIGHT	F.P. DN. IN.
026-0611-R002	12.810 fl. oz. ± 0.188 fl. oz. [378.04ml ± 5.55ml]	8.000oz. ± 0.313oz. [226.80g ± 8.86g]	2.074 [52.68]
026-0500-R004	12.810 fl. oz. ± 0.188 fl. oz. [378.04ml ± 5.55ml]	8.000oz. ± 0.313oz. [226.80g ± 8.86g]	2.074 [52.68]
026-1650-R000	12.790 fl. oz. ± 0.188 fl. oz. [378.25ml ± 5.55ml]	7.920oz. ± 0.313oz. [224.53g ± 8.86g]	1.966 [50.44]

**LABEL INDENT DETAIL**  
 SCALE: 4 TO 1

-5 ADDED 026-1650-R000 AS SEC. FIN.; ADDED CAPACITY CHART;	S	JUN 05 FEB 02	ALL LETTERING TO BE ROUND BOTTOM STYLE, PLATED IN GLASS, UNLESS OTHERWISE NOTED. CAPACITY VALUES BASED ON WATER AT 60° F (20° C)	METRIC SPOONS IN BRACKETS	STOCK	<b>OWENS-BROCKWAY</b> Glass Container Inc. Glass Container Division One Street Toledo, Ohio 43655
REMOVED WEIGHT AND CAPACITY NOTE.		PAT 11 APR 00		12 FL. OZ. L/W NON-REFILLABLE	DESCR. ROUNDO	
-4 UPDATED NOTES AND TITLEBLOCK.		KJH 22 OCT 99	RATED CAPACITY 12.000 FL. OZ.	( 354.89 ml )	INTL. E40 LIB OHAW	DRAWING NUMBER
-3 GAS VOLUME NOTE WAS 3 G.V.		MPW 15 OCT 98	OVERFLOW CAPACITY SEE CHART		DATE 25 FEB 97 REF. NO. C-91229-GC	BE-34158-5
-2 REV'D CUSTOMER NAME		BEV 20 MAR 97	FILL POINT SEE CHART		DRANK/DCL CHECKED	WOLD NUMBER
-1 ADDED 026-0500-R004 AS SEC. FIN.; ADDED WOLD NUMBER; ADDED OPERATION NOTE.			WEIGHT SEE CHART		APPROVED 6 FEB 02	GB-16238